

TFA-600HDP

 self-powered 3-way line array

Features

- Digitally self-powered
- Line array or virtual point source element
- Ultra low distortion
- 75°H x 16°V dispersion
- 136dB max output
- Trapezoidal enclosure
- Neodymium drive units
- Seamless arrayability

Applications

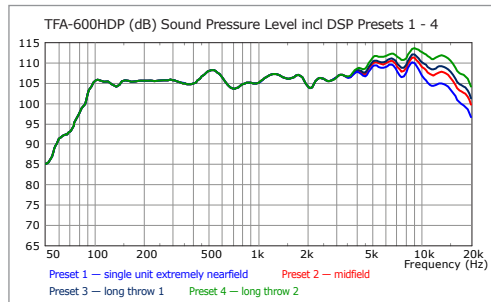
- House of Worship
- Flown clusters
- Ground-stacked touring
- Theatre and corporate
- Live music venues



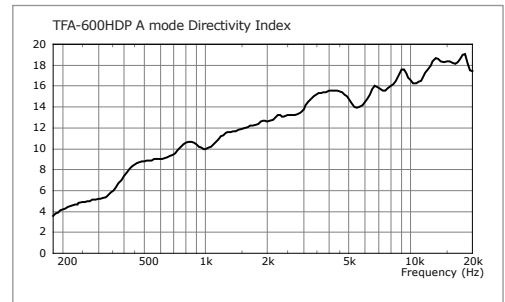
The TFA-600HDP is a compact self-powered trapezoidal three-way mid/high enclosure consisting of a 1" high frequency compression driver on a Dendritic horn, a 6.5" high-mid frequency driver on a patented Polyhorn™ device, and two Turbo-loaded 10" low-mid frequency drivers.

It combines a Dendritic HF waveguide and a midrange Polyhorn™ together in a single physically aligned, equal path length waveguide with 75° horizontal dispersion, ensuring a phase-coherent wavefront at the horn mouth. The TFA-600HDP is a networkable, digitally self-powered loudspeaker featuring innovative lightweight Class D amplifiers which utilise revolutionary 96kHz DSP technology to give operating efficiency in excess of 90%. Independent amplifier channels power the LF and MF/HF drivers separately. A Powercon connector provides mains input, and 3-pin XLRs are used for input and parallel link signal connections. RJ45 network connectors enable multiple loudspeakers to be controlled and monitored over a BVNet network using TurboDrive™ software. The enclosure features both vertical and horizontal integrated flying systems in order to facilitate flown and ground-stacked line array configurations, or single box and virtual point source applications. A flight-cased trucking system allows three cabinets to be pre-rigged and transported together. The 15mm birch plywood cabinet is equipped with eight recessed handles on the sides, rear, top and bottom.

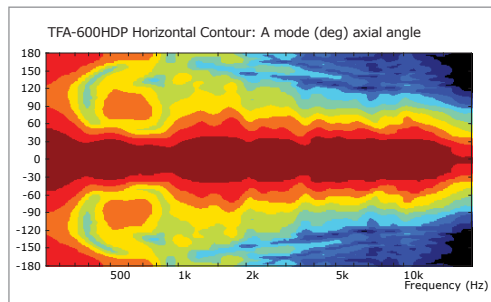
Frequency Response



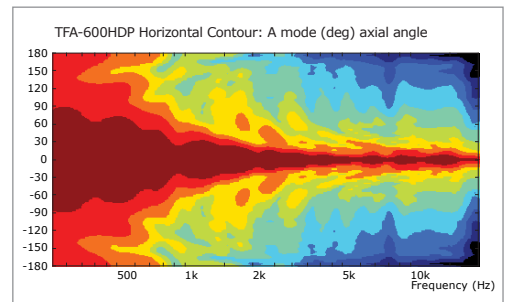
Directivity



Horizontal Contour



Vertical Contour



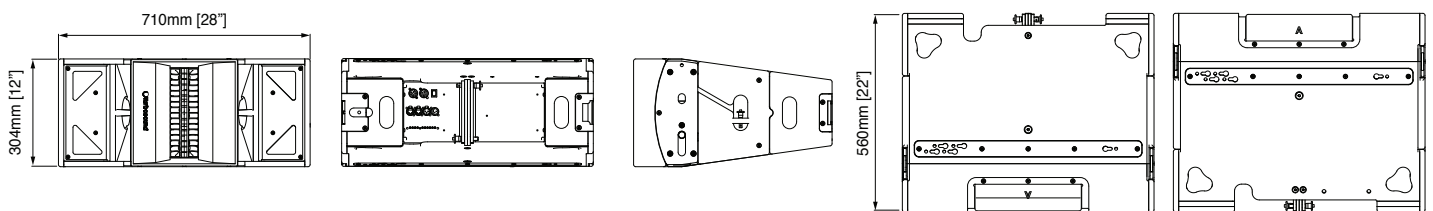
TURBOSOUND Ltd
 Star Road
 Partridge Green
 West Sussex
 RH13 8RY
 United Kingdom

t: +44 (0)1403 711447
 f: +44 (0)1403 710155
 e: techsupport@turbosound.com
 w: www.turbosound.com

TFA-600HDP

 self-powered 3-way line array

DIMENSIONS (HxWxD)	710mm x 304mm x 560mm (28" x 12" x 22")	
NET WEIGHT	44kg (96.8 lbs)	
COMPONENTS	2 x custom 10" (254mm) LMF driver, 1 x custom 6.5" (165mm) HMF driver on a midrange Polyhorn™, 1 x custom HF driver on a high frequency Dendritic device	
FREQUENCY RESPONSE	90Hz - 18kHz ±3dB, 80Hz - 20kHz ±10dB	
NOMINAL DISPERSION	75°H x 16°V @-6db points	
MAXIMUM SPL	130dB continuous (calculated SPL addition), 136dB peak	
AMPLIFIER	TYPE:	Class D inc SMPA and networked DSP
	POWER OUTPUT:	2 x 800 watts continuous @ 8 ohms (1kHz, 0.01% THD)
	DYNAMIC RANGE:	110dB
	INPUT CLIP:	10dBu
	BANDWIDTH:	20Hz - 20kHz ±0.5dB
	POWER REQUIREMENTS:	100V to 240V AC @ 50/60Hz
CONSTRUCTION	15mm (5/8") birch plywood throughout, finished in black semi-matt textured paint. Eight recessed carrying handles	
GRILLE	Powder coated perforated steel with reticulated foam backing	
CONNECTORS	Input: (1) XLR female, Link (1) XLR male, pin 2 hot; (1) male Neutrik Powercon; (1) female Powercon; (2) RJ45 network ports	
SPARES AND ACCESSORIES	LS-1025	10" (254mm) LMF loudspeaker
	RC-1025	Recone kit
	LS-6507	6.5" (165mm) HMF loudspeaker
	CD-117	HF driver
	RD-117	Replacement diaphragm
	TFA-600HDP AMP	Replacement amplifier
	MG-600H	Replacement metal grille
MORE INFO	More information can be found on our website: www.turbosound.com	



Limited Warranty

Every Turbosound loudspeaker product is warranted to the original end-user purchaser and all subsequent owners for a period of two (2) years for loudspeaker products, or one (1) year for electronics products, from the original date of purchase. Warranty coverage includes defects in materials and workmanship. It does not include:

- damage caused by accident, misuse, abuse, neglect or modification by any other person other than an authorised Turbosound representative,
- damage caused by overdriving, use with unsuitable amplifiers or amplifier failure,
- damage caused by failure to operate the product in accordance with the instructions contained in the user's manual,
- damage occurring during shipment in transit,
- claims based upon any misrepresentations by the seller,
- products which do not have the original components as specified in the product engineering information,
- products on which the serial number has been removed or defaced.

Should any fault develop with a component of your Turbosound system, please return the product, freight pre-paid, in its original packing carton, along with proof of purchase such as the original bill of sale, and a description of the suspected fault, to your local authorised Turbosound representative. The product serial number must be quoted in all correspondence relating to the claim. Insurance is recommended as Turbosound or its representatives are not liable for loss or damage in transit.